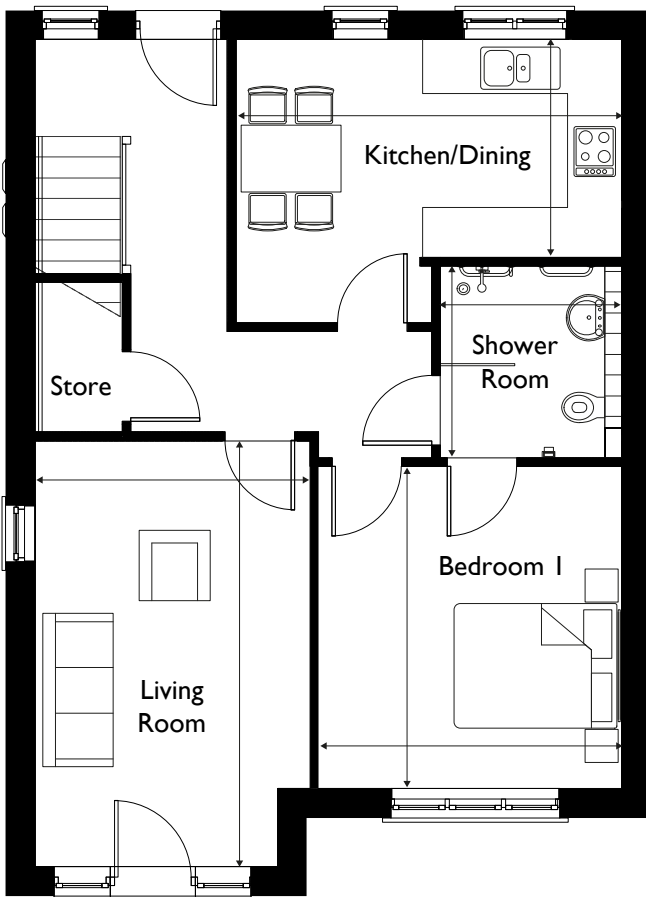


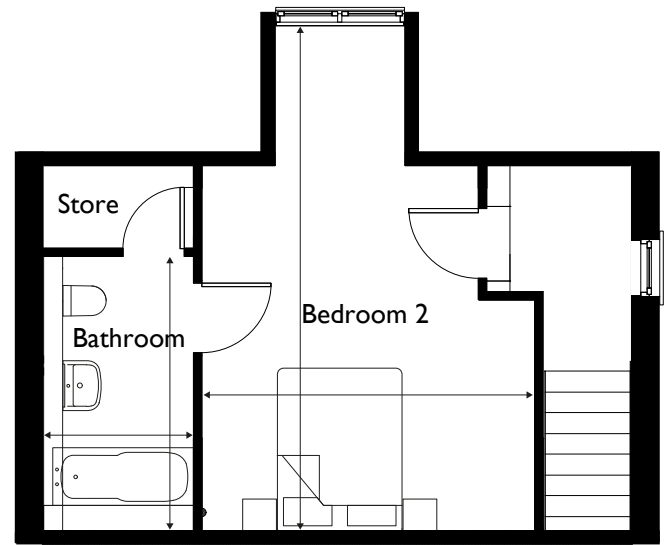
RANGEFORD VILLAGES

MICKLE HILL
PICKERING

The Welburn 2 bedroom Bungalow



Ground Floor



First Floor

Dimensions

Living Room	5.13m x 3.31m	16.83ft x 10.86ft
Kitchen/ Dining	4.63m x 3.38m	15.19ft x 11.09ft
Bedroom 1	3.83m x 3.65m	12.57ft x 11.97ft
Bedroom 2	5.94m x 4.00m	19.50ft x 13.12ft
Shower Room	2.31m x 2.18m	7.58ft x 7.15ft
Bathroom	3.30m x 1.80m	10.85ft x 5.90ft
Total Area	96.40m²	1038ft²

Any sizes and dimensions provided are for indicative guidance purposes only and are not intended to be used for items of furniture. Bathroom, kitchen and wardrobe layouts are indicative only and are subject to change. Apartment areas are provided as gross internal areas and may vary.

In keeping with our policy of continuous improvement Rangeford reserves the right to change or update its products and services, which may result in some of the details displayed being superseded. The information contained within this document does not constitute part of any offer, contract or warranty. Whilst the plans have been prepared with all due care for the convenience of the intending purchaser, the information contained herein is a preliminary guide only.

www.RangefordVillages.co.uk

